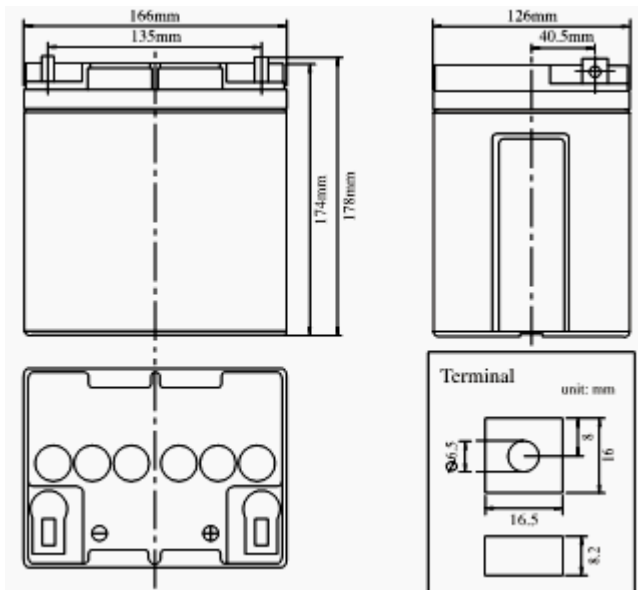


Product Image



Product Dimensions



Characteristics

| | | |
|--|---------------------------|---|
| Nominal Voltage | | 12V |
| Nominal Capacity (10 hour rate) | | 25Ah |
| Capacity 25°C (77 °F) | 20 hour rate (1.39A) | 27.8Ah |
| | 5 hour rate (4.6A) | 22.9Ah |
| | 1 hour rate (16.6A) | 16.6Ah |
| Internal Resistance | Full Charged Battery 25°C | ≤14mΩ |
| Capacity affected by Temperature (10 hour) | 40°C (104 °F) | 102% |
| | 25°C (77 °F) | 100% |
| | 0°C (32 °F) | 85% |
| Self-Discharge 25°C (77 °F) Capacity | after 3 month storage | 90% |
| | after 6 month storage | 80% |
| | after 12 month storage | 62% |
| Charge (Constant Voltage) 25°C (77 °F) | Float | Initial Charging Current Less than 6.0A Voltage 13.6-13.8V |
| | Cycle | Initial Charging Current Less than 6.0A Voltage 14.4-14.9V |

Packaging

| | | |
|-----------------------|-----------------|--------------|
| Battery Dimensions | Length | 166mm |
| | Width | 126mm |
| | Height | 174mm |
| | Total Height | 178mm |
| Box Dimensions | Length | 273mm |
| | Width | 178mm |
| | Height | 220mm |
| Quantity Per Box | | 2 PC per box |
| Net weight Per Cell | | 8.3 kg ±100g |
| Net weight Per Box | | 16.6kg |
| Gross Weight | | 17kg |

Discharge Constant Current per Cell (Amperes at 77°F 25°C)

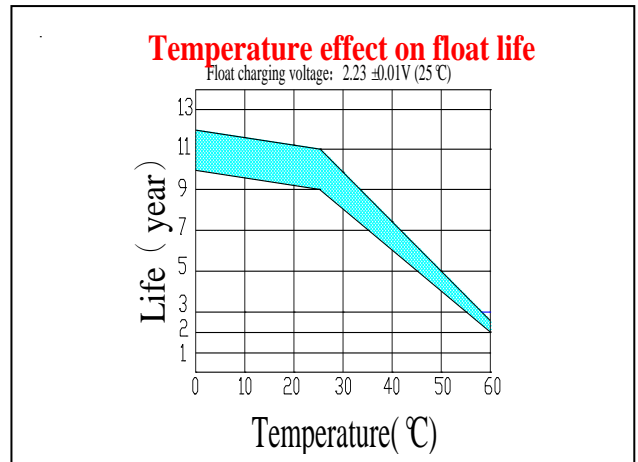
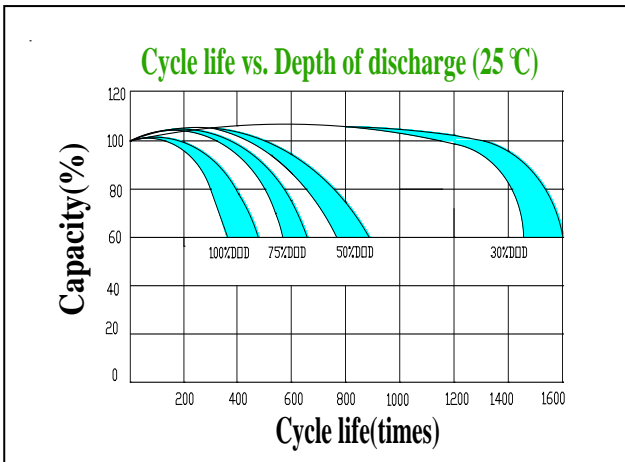
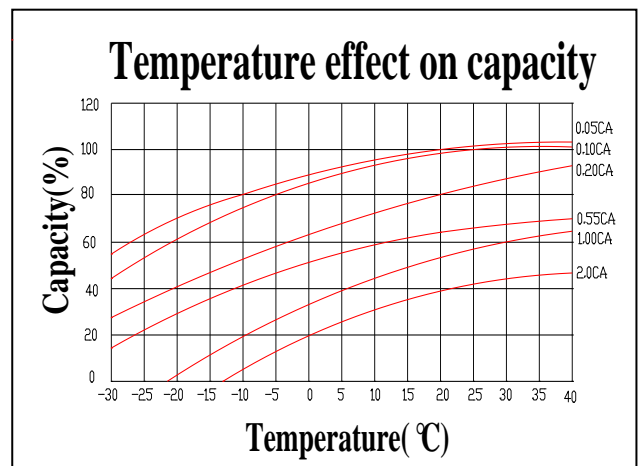
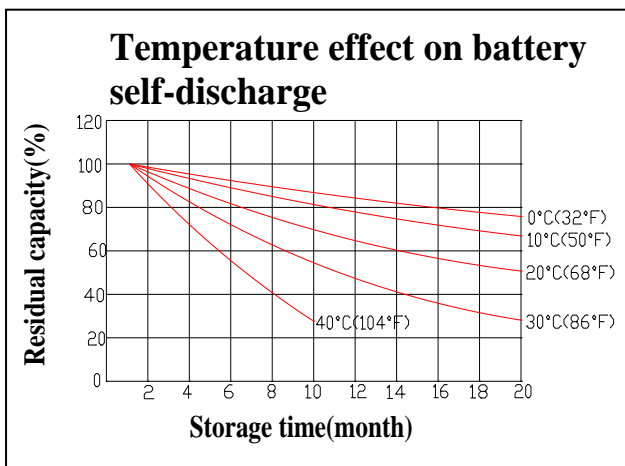
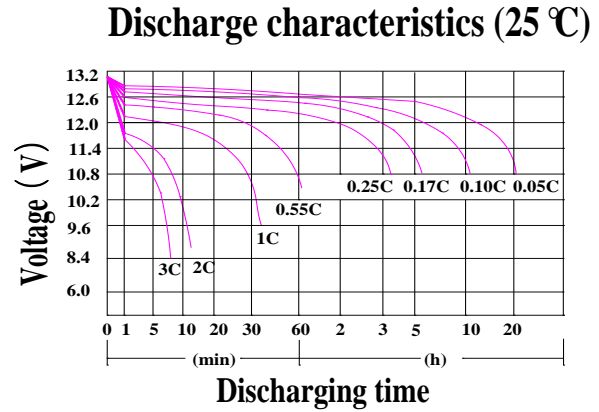
| F.V/Time | 5min | 10min | 15min | 30min | 45min | 1h | 2h | 3h | 5h | 8h | 10h | 20h |
|----------|------|-------|-------|-------|-------|------|-----|-----|-----|-----|------|------|
| 1.60V | 80.7 | 53.8 | 40.5 | 25.2 | 18.1 | 16.0 | 9.7 | 7.1 | 4.6 | 2.8 | 2.50 | 1.39 |
| 1.65V | 75.7 | 50.4 | 38.8 | 24.5 | 17.6 | 15.5 | 9.6 | 7.0 | 4.5 | 2.8 | 2.47 | 1.37 |
| 1.70V | 74.4 | 49.6 | 37.1 | 23.9 | 17.1 | 15.1 | 9.4 | 6.9 | 4.4 | 2.7 | 2.45 | 1.36 |
| 1.75V | 66.8 | 44.5 | 35.5 | 23.2 | 16.6 | 14.7 | 9.2 | 6.7 | 4.4 | 2.7 | 2.42 | 1.35 |
| 1.80V | 63.0 | 42.0 | 33.8 | 22.5 | 16.2 | 14.3 | 8.9 | 6.5 | 4.3 | 2.7 | 2.40 | 1.33 |

Discharge Constant Power per Cell (Watts at 77°F 25°C)

| F.V/Time | 5min | 10min | 15min | 30min | 45min | 1h | 2h | 3h | 5h | 8h | 10h | 20h |
|----------|-------|-------|-------|-------|-------|------|------|------|-----|-----|-----|-----|
| 1.60V | 150.5 | 100.3 | 75.6 | 47.0 | 33.7 | 29.8 | 18.1 | 13.3 | 8.5 | 5.2 | 4.7 | 2.6 |
| 1.65V | 141.1 | 94.0 | 72.4 | 45.8 | 32.8 | 29.0 | 17.8 | 13.0 | 8.4 | 5.2 | 4.6 | 2.6 |
| 1.70V | 138.7 | 92.4 | 69.3 | 44.5 | 31.9 | 28.2 | 17.5 | 12.8 | 8.3 | 5.1 | 4.6 | 2.5 |
| 1.75V | 124.6 | 83.0 | 66.1 | 43.2 | 31.0 | 27.4 | 17.1 | 12.5 | 8.2 | 5.1 | 4.5 | 2.5 |
| 1.80V | 117.6 | 78.3 | 63.0 | 42.0 | 30.1 | 26.6 | 16.7 | 12.2 | 8.1 | 5.0 | 4.5 | 2.5 |

Note The above data are average values, and can be obtained within 3 charge/discharge cycles. These are not minimum values. Cell and battery designs/specifications are subject to modification without notice. Contact **US** for the latest information.

Performance Characteristics



Battery Construction

| Component | Positive plate | Negative plate | Container | Cover | Safety valve | Terminal | Separator | Electrolyte |
|--------------|----------------|----------------|-----------|-------|--------------|----------|------------|--------------|
| Raw material | Lead dioxide | Lead | ABS | ABS | Si-Rubber | Lead | Fiberglass | Colloid(GEL) |